

J2 TECHNICAL ARTICLE

Number 36

From Octagon Heaven

July 4, 1981

Resource: The M.G. Car Company Ltd.

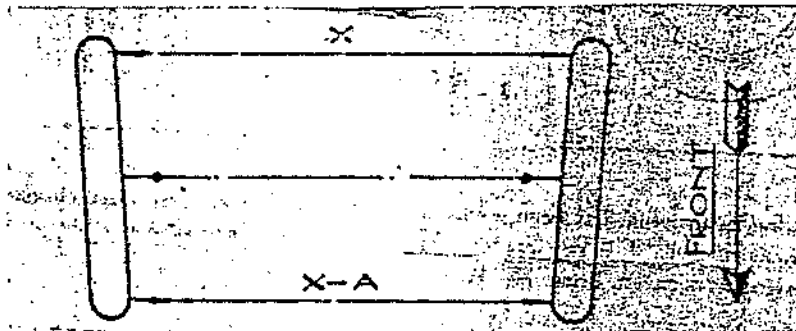
Issued Sept. 1938

Revised Sept. 1939

SERVICE INFORMATION SHEET NO.64 - FRONT WHEEL TOE-IN

The correct amount of front wheel toe-in is listed below for the various models.

It must be noted that if trammels are used for obtaining the adjustment, it is essential that the same spot on the wheel RIM at the same height from the ground is used for both the rear and front measurements. This is to prevent wheel buckle from affecting the reading obtained. If, however, a wheel alignment machine is used, wheel buckle does not affect the reading; incidentally, this type of machine calculates the correct amount of "toe-in" on all axles irrespective of the geometry of the front axle.



Model	"toe-in" A
M., VA	1/8"
D., F., J., L., PA., PB., NA., SA., TA., WA., TB.	3/16"
K1., K2., KN.	1/4"