

J2 TECHNICAL ARTICLE

Number 134

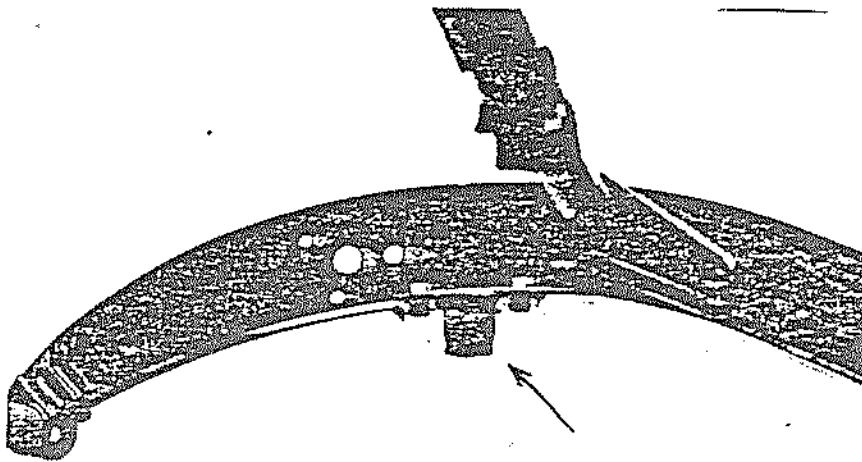
November 30, 1982

From Octagon Heaven

CHASSIS/AXLE STOPS

Under the chassis in the front and on top of the chassis at the rear axle are rubber bumpers to keep the front and rear axles from hitting the chassis. The front axle stop is held to the chassis by two bolts through a mounting plate. The rear axle stop is held in position by a bolt going down through the center.

The rubber is of a medium hard rubber. They will compress some but will quickly stop the axle movement.



The front axle stop - stops bottoming movement of chassis.

The rear axle stop - stops upward movement of chassis.

