

J2 TECHNICAL ARTICLE

Number 177
October 15, 1983

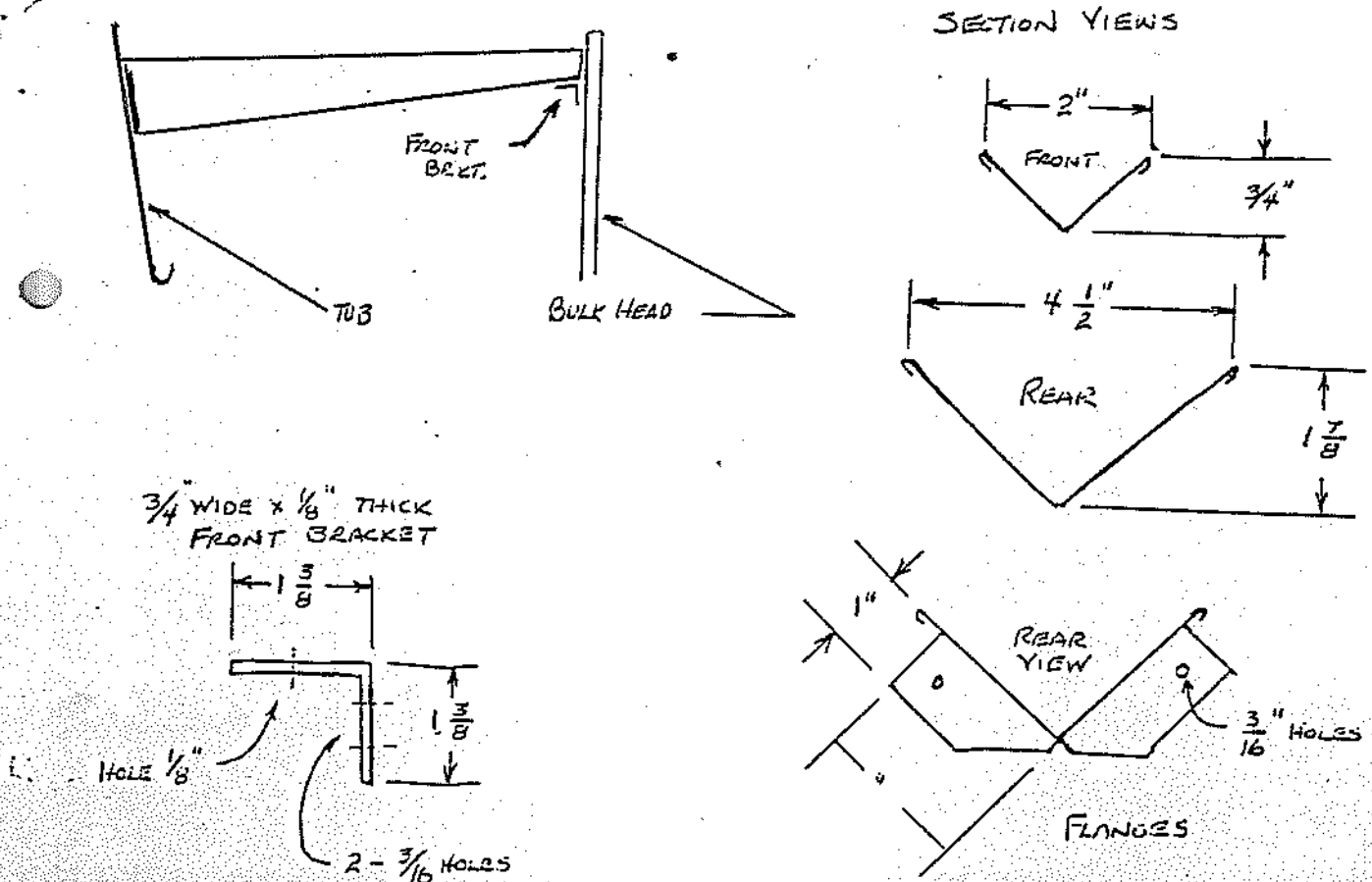
From Octagon Heaven

THE RAIN GUTTER

The Rain Gutter which spans the area between the tub and the Bulk head (fire wall) picks up water dripping down from the hinge on the bonnet above. This collected water runs to the tub end, down the front of the metal structure of the tub, into another gutter to be taken to the outside.

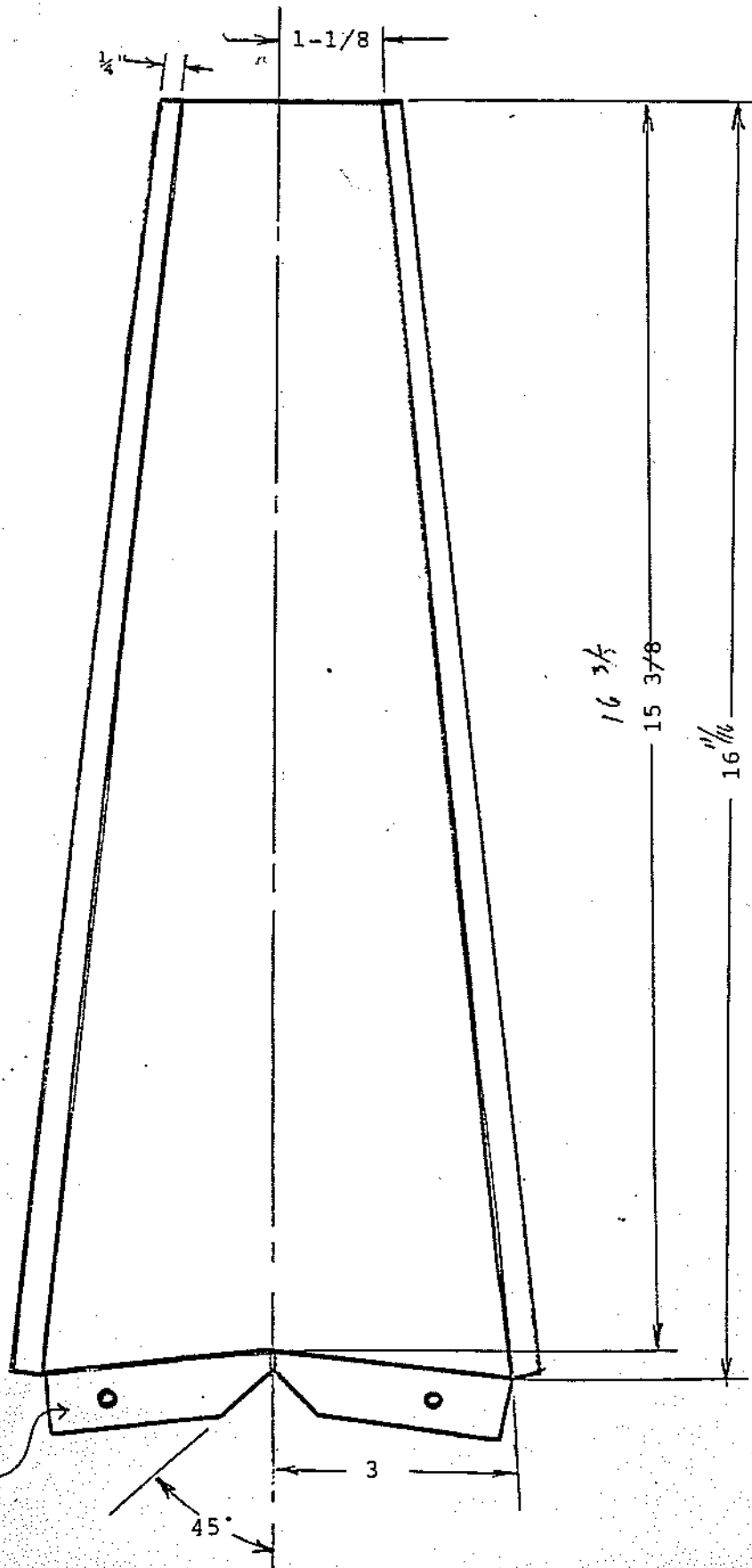
The rain gutter is made of 20 gauge mild steel, thought to be galvanized.

The front is held to the bulk head by a angle bracket. The rear is held to the tub by flanges.



(OVER)

All Dimensions on both pages are approximate and must be fitted to your car.



See page 1