

J2 TECHNICAL ARTICLE

Number 189

March 16, 1984

From Octagon Heaven

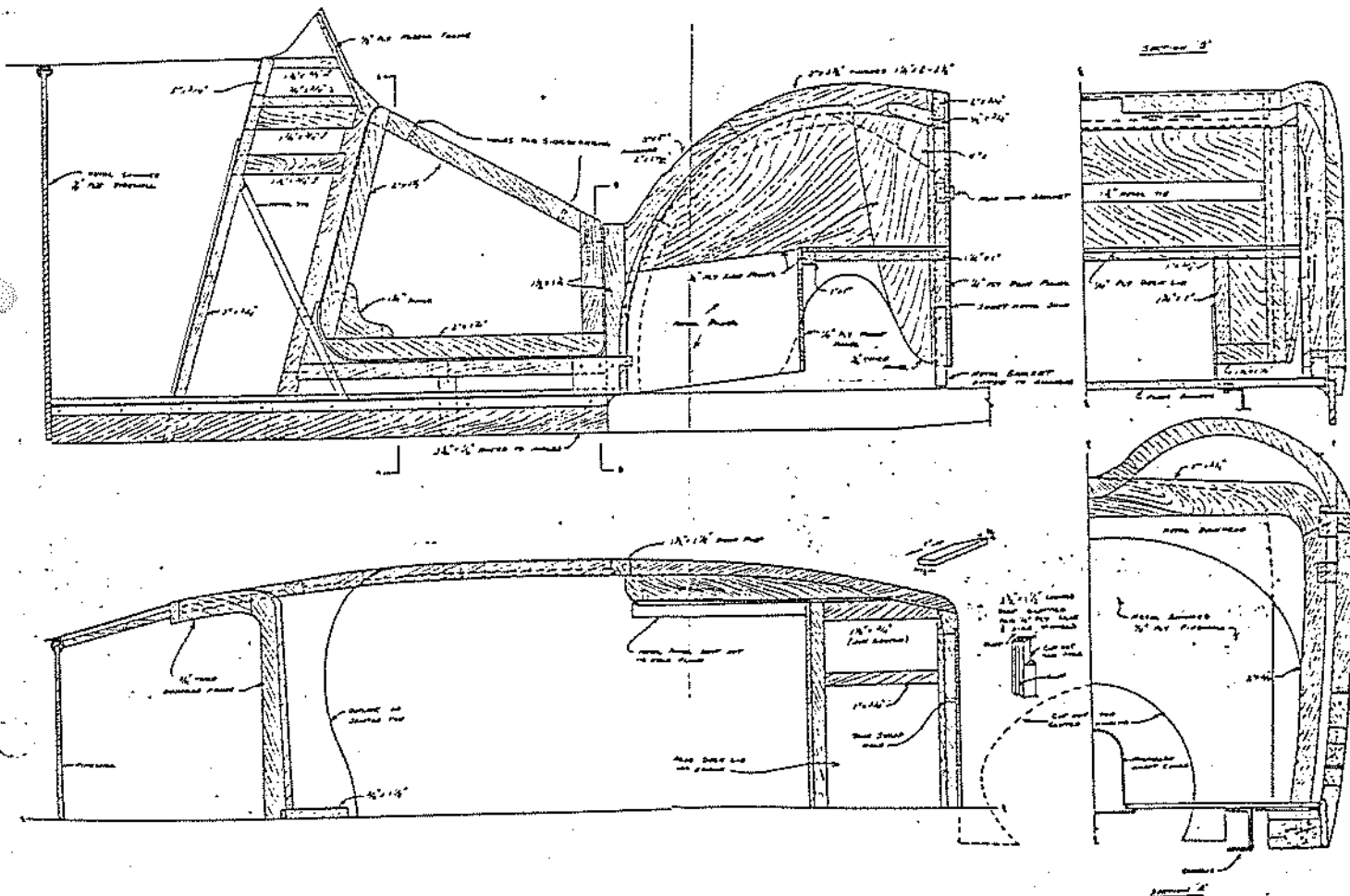
Resource John Morris

THE WOOD COACH WORK

The following drawings are a reduced and reproduced copy of a tracing made by Mr. Morris from what appears to maybe be an original M.G. Car Company print for the 1932 F2 and 1932 J2. The original shows part of a logo and professional lettered "1932 MG _____" "

The drawing below is a full reproduction reduced from the tracing sent to me. The following pages, reproduced on one side only give you full sized copies of the tracing. If you want you can cut and paste or tape together a full drawing.

- Page 2 -- upper left
- Page 3 -- upper right
- Page 4 -- lower left
- Page 5 -- lower right



(continued 4 pages)

