

## J2 TECHNICAL ARTICLE

Number 224

August 11, 1984

From Octagon Heaven

Source : John Morris  
Ray Hollis

### FUEL TANK

This article is also because John Morris had an original parts drawing that he wanted to share with all of us. Thank You John. Special thanks also goes to Ray Hollis who took the old, dark, blue print and made a tracing out of it.

The drawing on the second page is the complete 30" x 40" drawing reduced down to 8½ x 11. Interestingly, you can read most of the dimensions!

On page 3 and 4 I provided the drawing in two sections a little larger than on page 2.

On page 5, 6, & 7 I provided the three main areas still larger (not quite as large as the original but in more detail)

I would not suggest that you try to build a fuel tank all if this drawing for there are a few things missing:

- a) the Section view of the end panel to show amount of the ridges.
- b) the gauge of steel to be used.
- c) dept of the grooves in the back side
- d) baffle hems and welding details for all.

But we have a drawing to add to our file and can check out our own petrol tanks to see if they are to original.

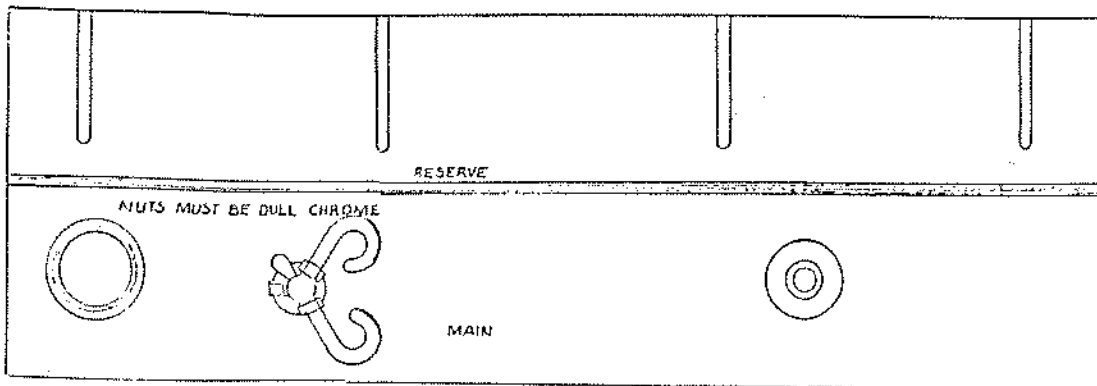
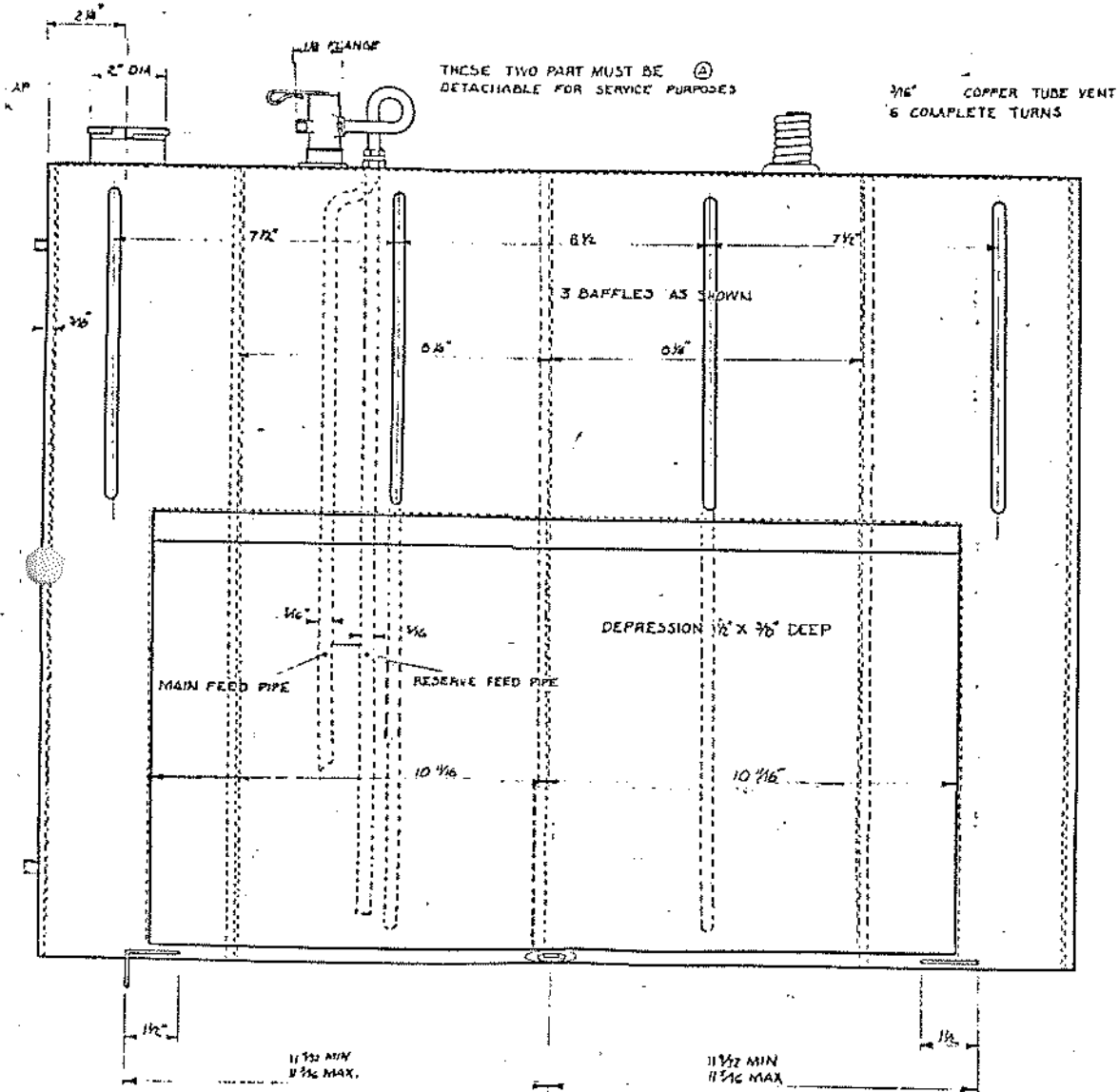
One Parts supplier in England has had some J2 tanks made and I also know where he had them made so you may wish to go straight to the manufacturer if you need a tank.

Moto-Build Ltd.  
128 High St.  
Hounslow  
Middx  
England

(Continued on Back Side)





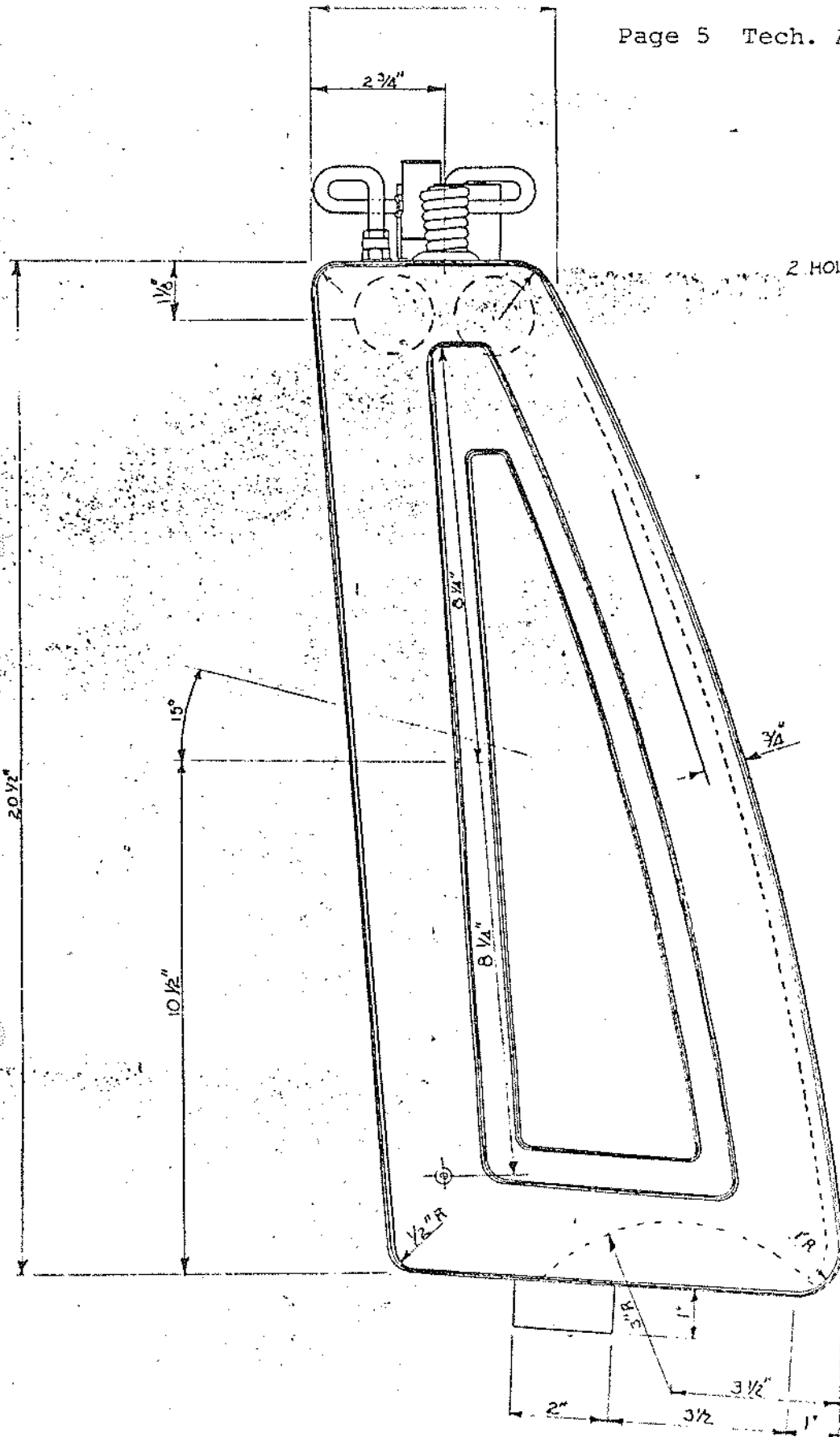


BEND MUST NOT OVERLAP EDGE OF TAP

TWS. 3 WAY TAP TO BE SUPPLIED AND FITTED  
BY MG CAR CO LTD. TAP MUST BE DETACHABLE

CEA  
NO. 95  
SEE PL

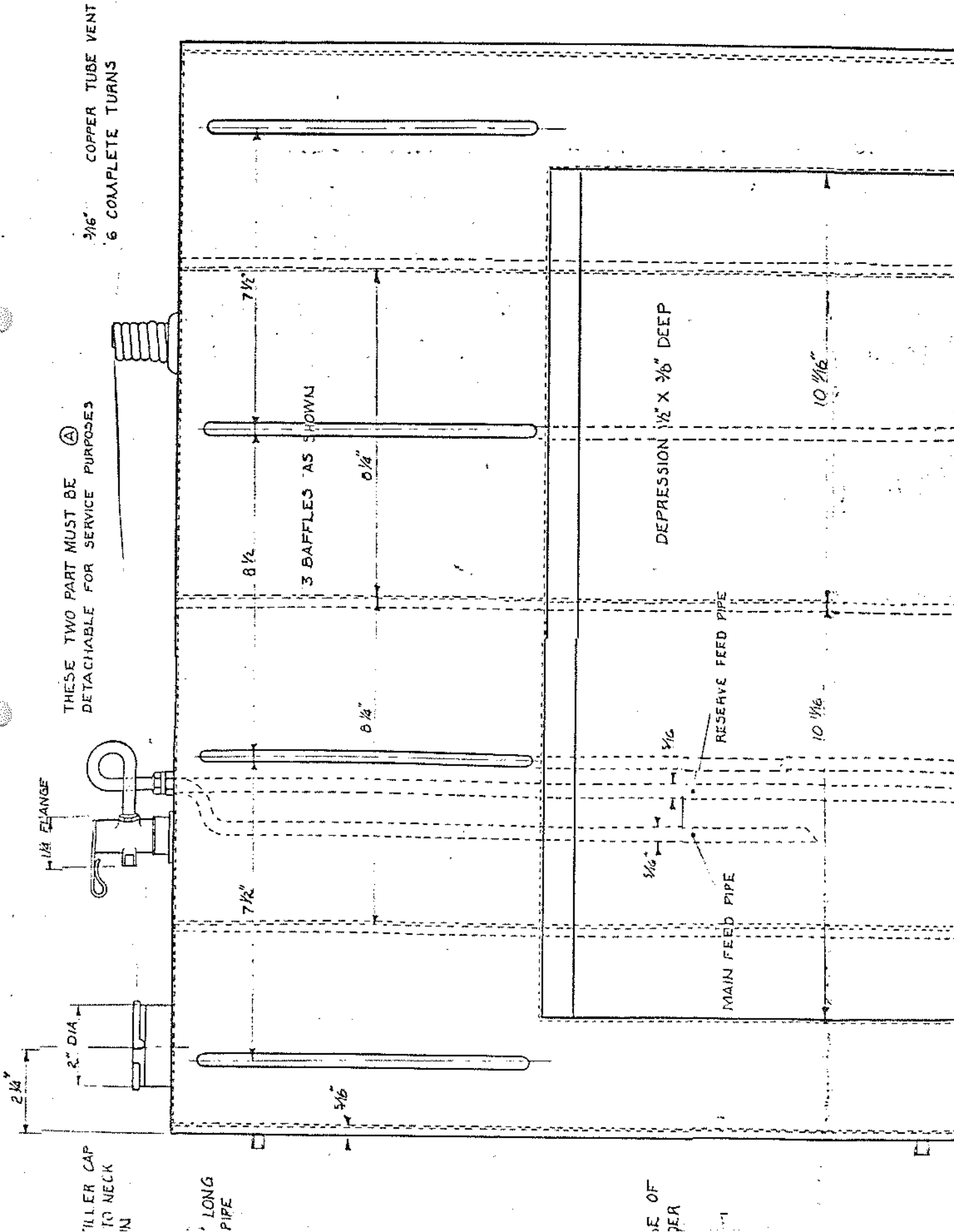
2 HOLES 1/2" DIA IN BAFFLE PLATE  
3 SETS  
WELDED

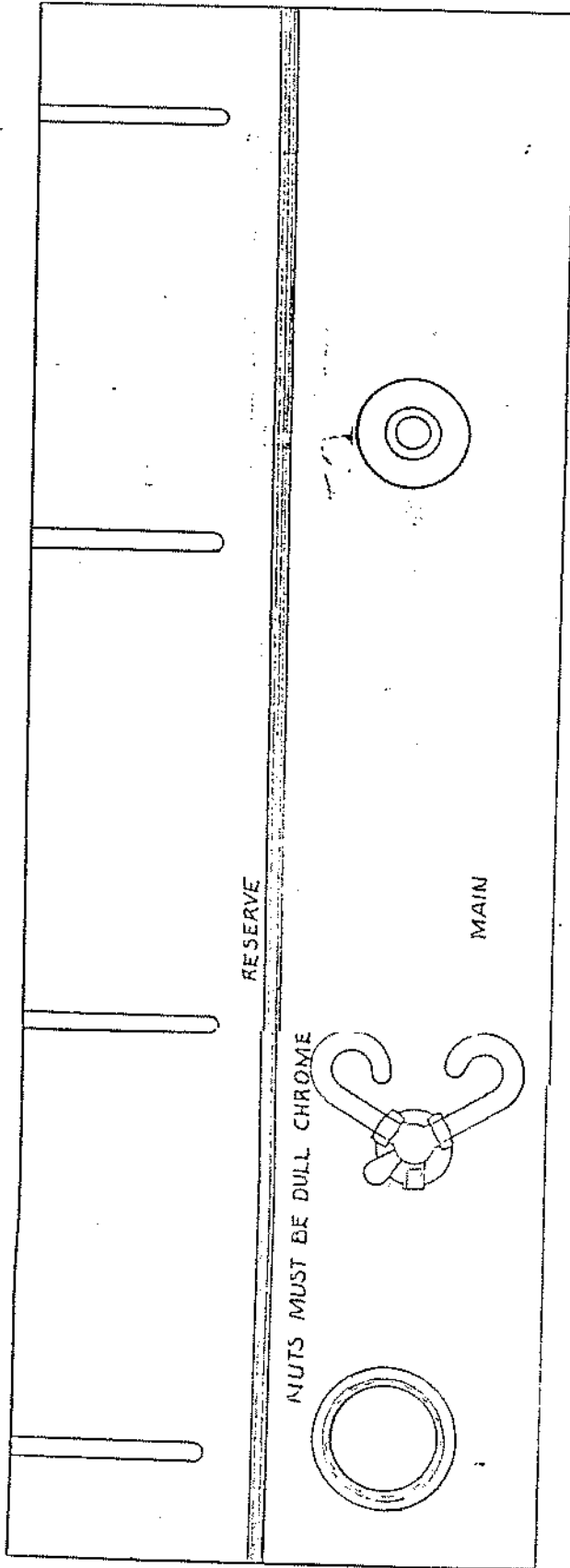
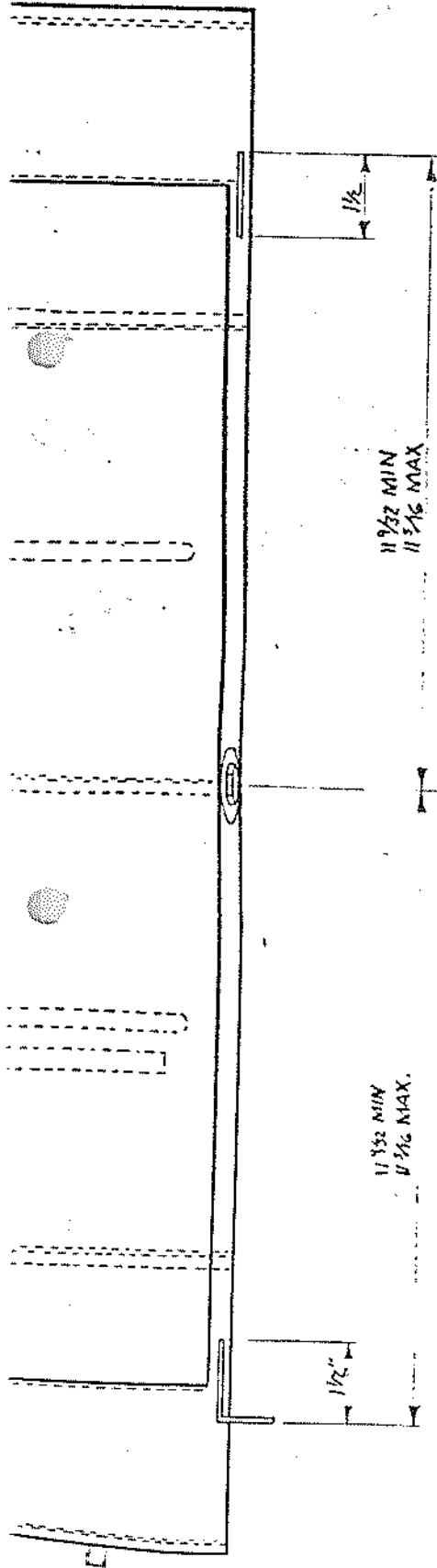


PETROL PIPE TO FOLLOW  
CONTOUR OF TANK

END OF MAIN FEED PIPE

END OF RESERVE FE





BEND MUST NOT OVERLAP EDGE OF TAP

T.W.S. 3 WAY TAP TO BE SUPPLIED AND FITTED BY MG CAR CO LTD. TAP MUST BE DETACHABLE