

J2 TECHNICAL ARTICLE

Number 238

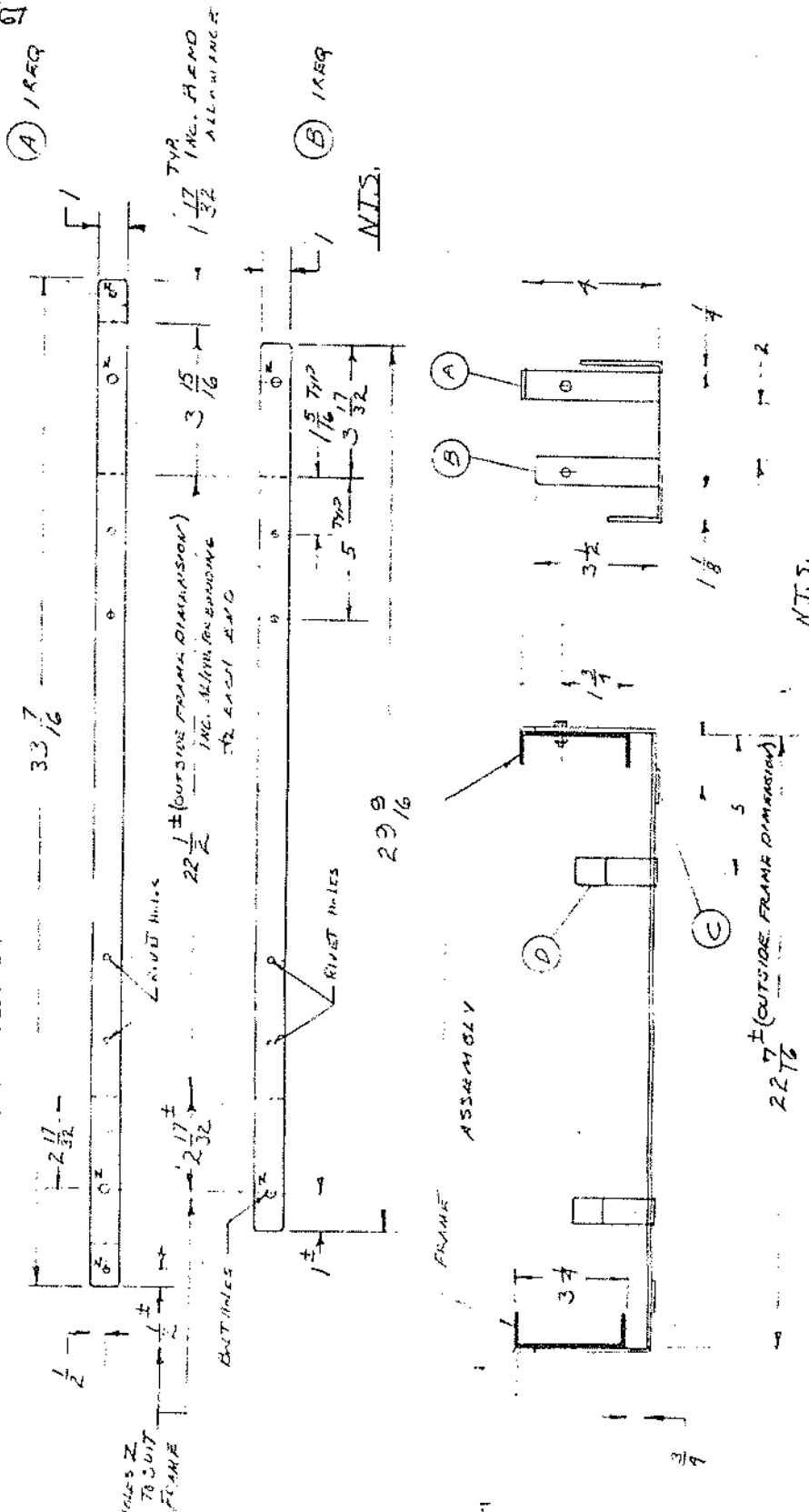
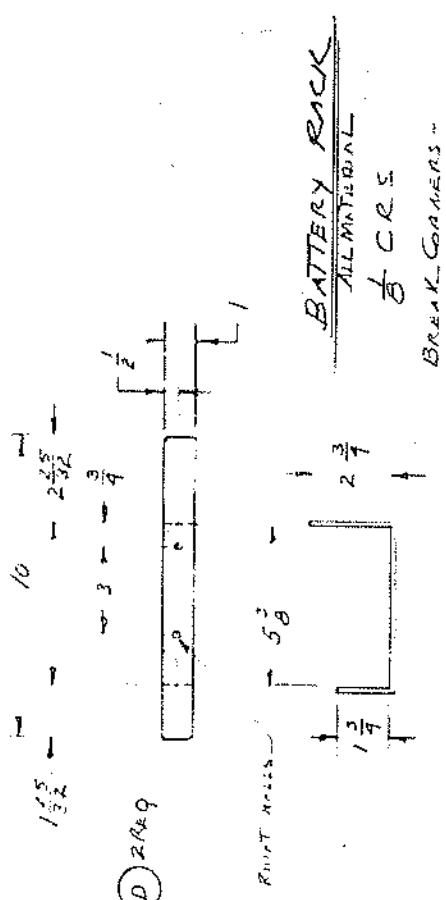
April 2, 1985

From Octagon Heaven

Source : D.P. GRAHAM

BATTERY TRAY

- A - 1/8" x 1" x 33 7/16"
- B - 1/8" x 1" x 29 9/16"
- C - 1/8" x 1 7/8" x 4" - 2 REQ
- D - 1/8" x 1" x 10" - 2 REQ



22 7/16 ± (OUTSIDE FRAME DIMENSION)

NTS.