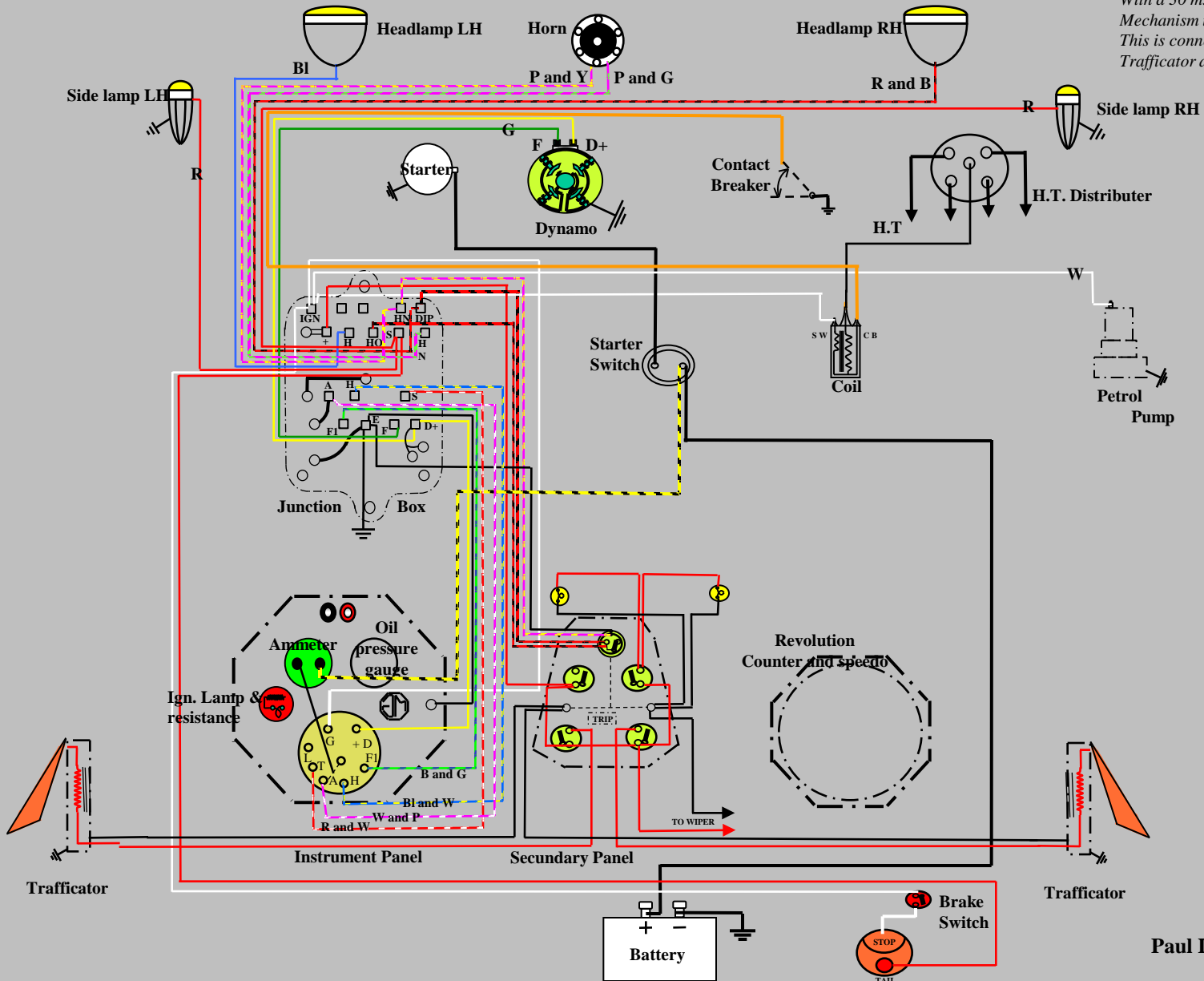


# wiring diagram MG P type and PB

On late P models and all PB models, the Petrol pump has an earth wire fitted leading to the junction box. All PB models are fitted with a 30 m.p.h. warning light operated by Mechanism incorporated in the speedometer. This is connected to the junction box via the Trafficator and dash lamp switches.

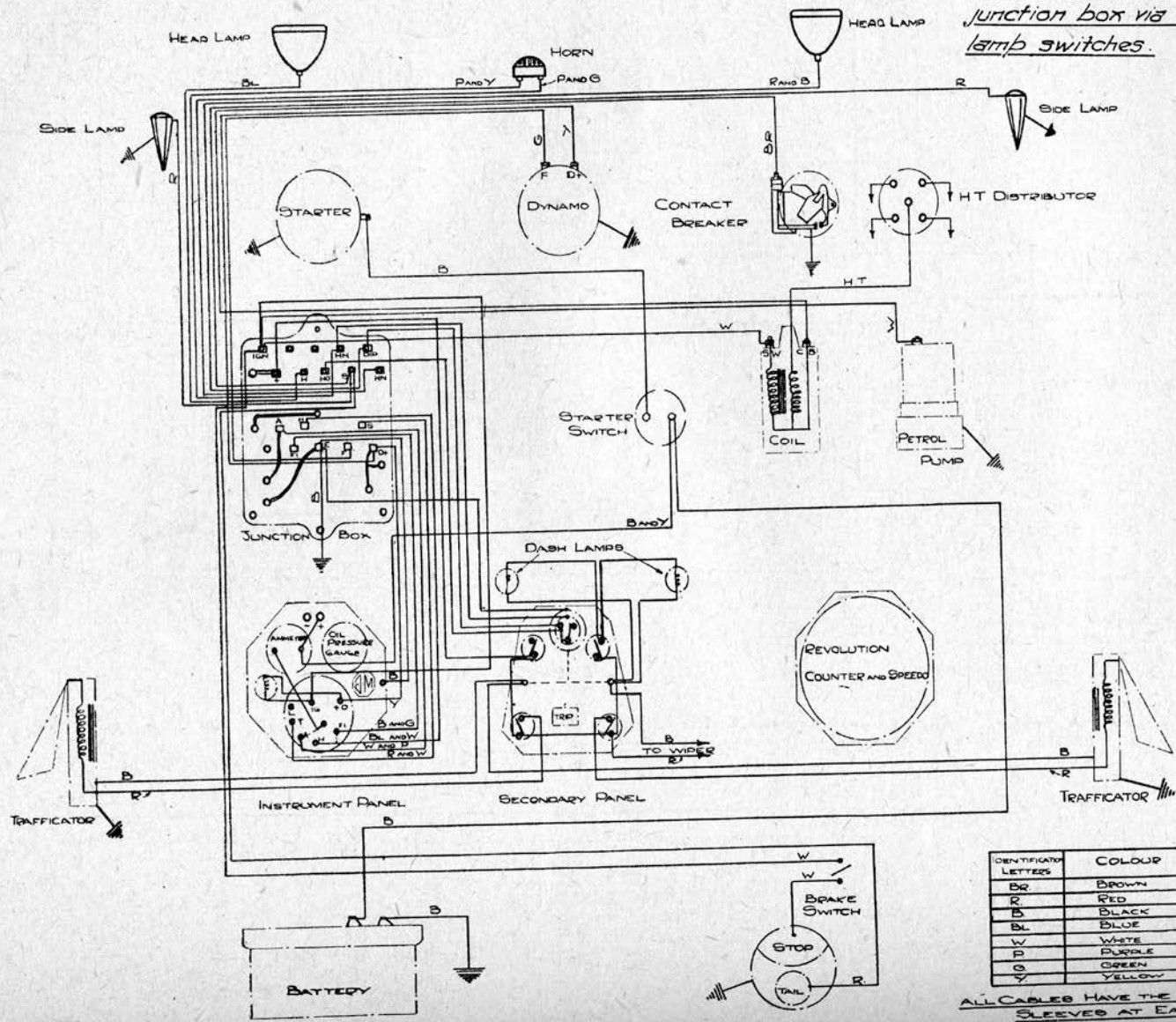


Br	Brown
R	Red
B	Black
Bl	Blue
W	White
P	Purple
G	Green
Y	Yellow

all cables have the same color sleeves at each end

WIRING DIAGRAM 'P' TYPE AND 'PB' TYPE MIDGETS.

*On late P Models and all PB Models, the petrol pump has an earth wire fitted leading to the junction box. All PB Models are fitted with a 30 m.p.h. warning light operated by mechanism incorporated in the speedometer. This is connected to the junction box via the trafficator and dash lamp switches.*



IDENTIFIER LETTERS	COLOUR
BR	BROWN
R	RED
B	BLACK
BL	BLUE
W	WHITE
P	PURPLE
G	GREEN
Y	YELLOW

ALL CABLES HAVE THE SAME COLOUR SLEEVED AT EACH END.

Wiring Diagrams for P type and PB type Midgets